

# MXR

The Micro Rider



reddot design award  
winner 2013



**REDUCE COSTS BY UP TO 36%,  
INCREASE PRODUCTIVITY BY 43%  
AND QUICKLY RECOVER YOUR INVESTMENT!**

 **FIMAP®**



Mxr

Designed to be more productive  
because it's small and fast



Mxr SCRUBS  
AND DRIES IN THE SAME AREAS  
WHERE A WALK-BEHIND SCRUBBING  
MACHINE WOULD NORMALLY BE  
USED, BUT IT'S FASTER  
AND MORE COMFORTABLE

The operator remains comfortably  
seated and can easily move in limited  
spaces, quickly passing from one area  
to another – even in a lift – in total  
safety and without having to get off  
the machine.



POSSIBILITY TO WORK  
AT DOUBLE THE SPEED  
OF A WALK-BEHIND  
SCRUBBING MACHINE

Take it wherever it's needed!  
It can be transported  
in commercial electric minivans,  
so you can take it wherever you want,  
even to the heart of historical town centres.



Cleans perfectly along walls without  
any need for manual cleaning operations

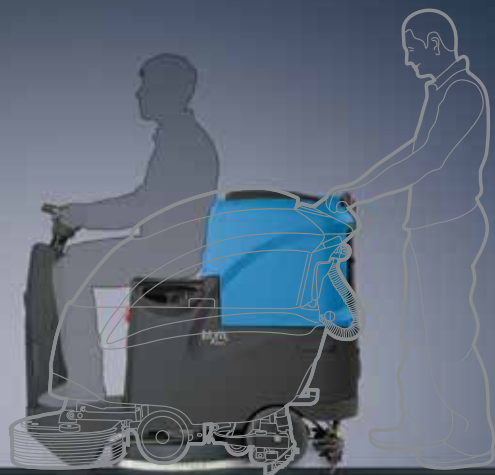




Mxr

Designed to improve the cleaning  
of small areas

Why walk, when you can ride?



#### DESIGN

The lowered footboard  
and access from both sides make it  
safer and more practical.



MINIMUM  
AISLE TURN  
1540 mm



ADD VALUE TO YOUR  
INVESTMENT – CHOOSE A SCRUBBING MACHINE  
THAT LOWERS MANAGEMENT  
AND USAGE COSTS THROUGHOUT ITS LIFE-CYCLE

- it requires little maintenance
- it is built with top quality materials
- it uses waste-reducing technologies
- it scrubs more square metres in the same time
- it can be used anywhere, at any time
- it is comfortable, safe and user-friendly





Mxr


Designed to offer  
a new driving experience

Ergonomic steering wheel  
with controls and display  
to make driving intuitive and safer,  
because the operator isn't distracted and  
the scrubbing functions are activated  
without ever leaving the driving wheel



QUALITY DESIGN IN EVERY LAST DETAIL

Steering is light and smooth,  
so it can be manoeuvred and used  
in even the most congested areas  
and the narrowest passages with the minimum effort

Eco Mode Device 	MODEL	
	Mxr	Mxr (FSS)
	Sound level reduction	Sound level reduction
	Energy saving	Energy saving
	-	Water and detergent saving



USER-FRIENDLY DIGITAL DISPLAY

# Mxr

## Designed to increase safety and to protect operator health

### EMERGENCY STOP

Immediate machine stop, just by pressing a single button



Low centre of gravity  
and excellent weight distribution,  
to ensure the utmost stability  
even on slopes

Automatic reduction of speed on bends

ANTI-OVERTURN BUMPER



54 dB (A)

With Eco Mode button on  
(Device to reduce noise level)



The low sound level – 54 dB (A) – means  
the machine can be used anywhere,  
at any time, without disturbing the people  
nearby and safeguarding the operator's health



Can be customised  
with accessories to  
increase productivity



SAFETY BRAKE  
Automatic machine stop  
when the pedal is released

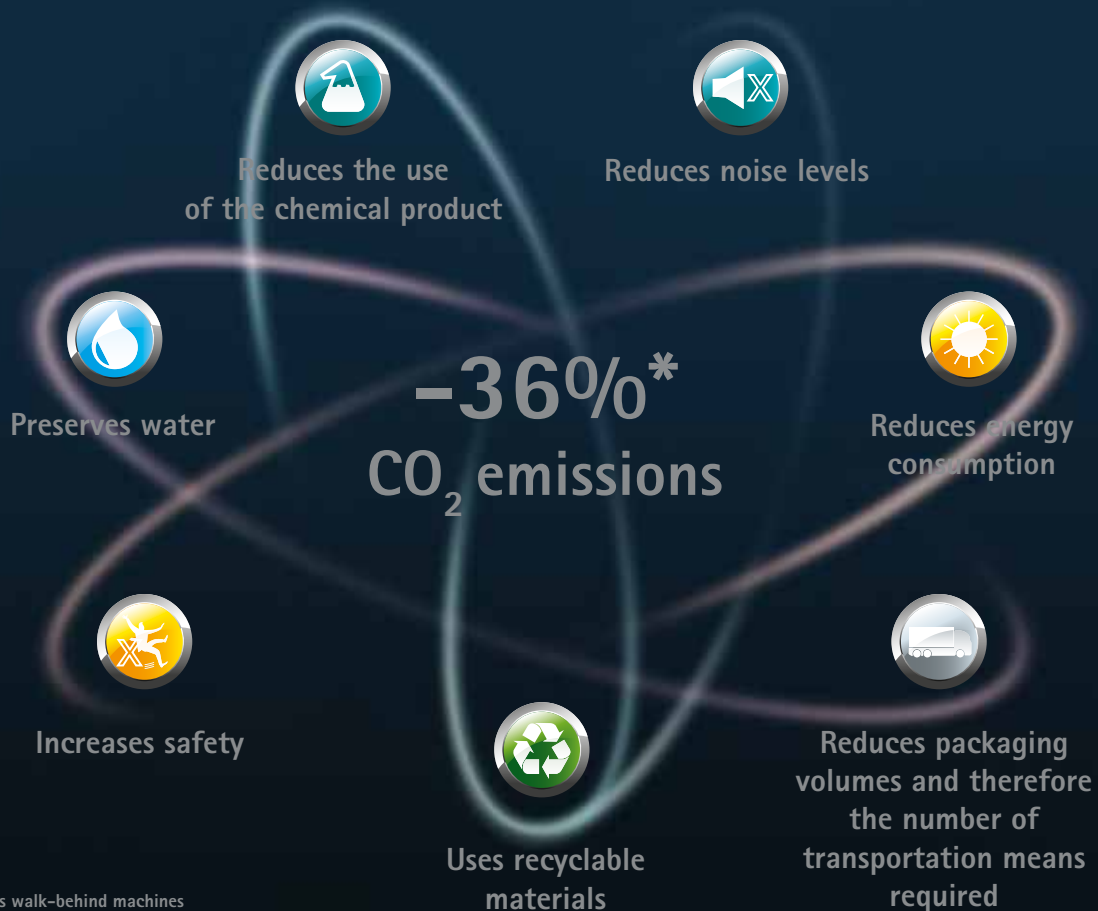
# Mxr

## Designed to respect the environment

Mxr aims to offer reduced environmental impact, in both the production and usage phases. It is designed using the least range of materials and concentrating on those that can be recycled, making end-of-life disposal easier.

Mxr needs less packaging, thereby rationalising the transport phase, and uses technologies that limit the waste of water, chemical product and energy.

Mxr is built in line with the standards of official certifications, guaranteeing low noise and disturbance levels to safeguard the environment and to ensure operator safety.



\* In specific tests vs walk-behind machines

# Mxr

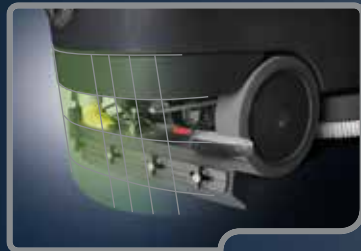
## Designed to keep the investment value high over time



No tools are needed for daily maintenance



The elements requiring daily maintenance can easily be identified by their yellow colour. At the end of his work-shift, the operator can quickly see which parts need sanitising, without wasting any time. This increases machine efficiency and keeps its value high



All the components are protected inside the machine unit. This means less risk of breaking in case of accidental impact, avoiding additional repair costs and ensuring a longer working life

FFF (FimapFastFill)  
Quick filling  
of the solution tank



Measuring cap,  
to add the proper  
detergent percentage



TECHNICAL DATA		Mxr
Squeegee width	mm	703-799
Disc brush Ø	(No.) mm	(1) 560
Brush motor	V/W	24/450
Brush rpm	rpm	170
Brush pressure	kg	23
Suction motor	V/W	24/310
Traction motor	V/W	24/300
Suction vacuum	mbar	70
Forward speed	km/h	0÷5,5
Working width	mm	560
Supply/traction	V	24/aut.

TECHNICAL DATA		Mxr
Minimum aisle turn	mm	1540
Battery compartment dimensions (L x h x w)	mm	362x290x354
Gradeability	%	20
Batteries (GEL) (No.)	V/Ah	12/134 (2)
Batteries (WET) (No.)	V/Ah	12/150 (2)
Batteries weight	kg	80
Machine weight (without battery)	Kg	110
Solution tank	l	70
Recovery tank	l	70
Working capacity up to	sq.m/h	3000
Machine dimensions L x h x w	mm	1265x1030x600
Electromagnetic compatibility Emission standard		EN 61000-6-1, 2, 3, 4

Ask your dealer Fimap Service Packs:  
no more unexpected costs!



Fimap can offer the ideal solution according to different budgets and needs, choosing one of the three solutions: LIGHT Service Pack covering the ordinary maintenance, SMART Service Pack for ordinary maintenance and the replacement of wear materials, or FULL Service Pack which, besides the services of the first two packs, includes also the replacement of consumables.

Choosing one of Fimap Service Packs you will benefit of:

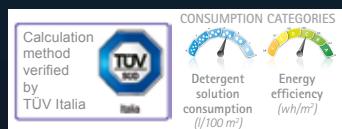
- Peace of mind for your purchase regularly controlled by qualified technicians
- No more added costs to pay
- Performances guaranteed over time
- Longer product life

For further details please refer to general terms and conditions available at [www.fimap.com](http://www.fimap.com) inside "Fimap Service Pack" of "Services" section

## WARRANTY

Ask your country dealer more information about warranty conditions

## CERTIFICATIONS



For any additional information or for a demo please contact your usual Fimap dealer

**FIMAP®**  
[www.fimap.com](http://www.fimap.com)

FIMAP spa - Via Invalidi del Lavoro, 1 - 37059 S. Maria di Zevio - Verona - Italy  
Tel. +39 045 6060411 - Fax +39 045 6060417 - E-mail: [fimap@fimap.com](mailto:fimap@fimap.com)

